



Ysgol Pen-y-Bryn

PROPOSAL TO INCREASE THE PLANNED PLACES AT THE SPECIAL SCHOOL YSGOL PEN-Y-BRYN BY 20 PLACES FROM 1 APRIL 2019

Introduction to the Proposal

1. Ysgol Pen-y-Bryn is currently full and is likely to be for the foreseeable future. There is significant demand for places which is leading the local authority to have no other option than to place pupils into independent and out of county schools. This is a national pressure in England and Wales where a shortage of special school places for pupils with additional learning needs has been reported in national newspapers and the BBC.
2. In mainstream schools, there are a number of specialist teaching facilities (STFs) which support pupils with moderate/severe learning difficulties, and STFs to support pupils with moderate/severe autistic spectrum disorder (ASD). All of the ASD STFs are also full.
3. There is significant pressure for ASD specialist places, despite opening the three new STFs at Portmead and Dунvant Primary Schools and Birchgrove Comprehensive School.
4. To increase the number of planned places at this school would trigger the requirement for statutory consultation under the Welsh Government's School Organisation Code. Before moving forward with its proposal, the council wishes to seek the views of all of those with a likely interest in the proposal, so that their views can be taken into account before decisions are made. Those being consulted on this proposal are the pupils, parents, governors and staff of Ysgol Pen-y-Bryn, as well as pupils and parents on the waiting list for a placement at an ASD Specialist facility, neighbouring schools, the local community and other interested parties.
5. The consultation period will take place between 5 June 2018 and 18 July 2018. A report on the outcome of these consultations will be submitted to a Cabinet meeting of elected members on 20 September 2018.

What would this proposal mean?

6. This proposal seeks to increase the planned places at Ysgol Pen-y-Bryn by 20 places for young people with moderate/severe autistic spectrum disorder (ASD) aged 3-18 with effect from 1 April 2019.
7. Transportation for the learners will be in accordance with the council's policy for home-to-school transport. Traffic management plans are being undertaken for the area surrounding the school.

8. Further statistics relating to this proposal can be found at Appendix A.

Why has this proposal been brought forward?

9. The additional 20 planned places are needed to increase the overall number of special school places available to help to meet the increased demand. It would also alleviate pressure on the moderate ASD STFs in Swansea. The pupils with the more severe needs (i.e. high ASD symptomatology) would transfer to Ysgol Pen-y-Bryn, allowing the authority to place pupils with moderate ASD into the appropriate STFs. It would also alleviate pressure on secondary mainstream schools and STFs who are struggling to cope with the demands of managing pupils with more severe learning difficulties.
10. If provision is not increased, learners with special needs may have to travel out of county or be placed in independent schools in order to receive the specialist provision they require. This will cost more as well as potentially involving travel for the young people and their families.
11. The authority has experienced a significant increase in the number of learners receiving a diagnosis of ASD since 2012:

Date	No of Statements for pupils with diagnosis of ASD or Asperger's
2018	542
2017	497
2016	426
2015	368
2014	311
2013	244
2012	204

12. The information in Appendix A includes a summary of the last Estyn inspection findings in 2013. This inspection found that Ysgol Pen-y-Bryn's performance and prospects for improvement were both good. The increase in planned places is unlikely to affect the schools performance as staff are already working with learners with similar difficulties successfully now. Increasing staffing will bring more flexibility and increase the pool of skills and knowledge in the school. The increase in planned places is already part of the school's improvement plan.
13. Further information on the proposal can be found in the report to Cabinet on 17 May 2018
<https://democracy.swansea.gov.uk/documents/g7546/Public%20reports%20pack%20Thursday%2017-May-2018%2014.00%20Cabinet.pdf?T=10&LLL=0>

Financial Information

14. No capital funding is being sought, as the school have used their own delegated funding to create additional classroom and ancillary spaces.
15. The annual revenue costs for 20 additional planned places at Ysgol Pen-y-Bryn i.e. 12 Band G places plus 8 Band E places, is £343,630 per annum once fully

established (based on FY2017-2018 planned place funding, additional pupil numbers and adopting the revenue costs for the increase in floor area). This should be considered in the context that a single pupil placed into Ty Danycoed (independent sector), is costing the local authority in excess of £100,000 per annum.

16. The revenue funding would be delegated to Ysgol Pen-y-Bryn each year. The school will then manage the staff and pupils accordingly.
17. There could be associated transport costs for the learners to attend the school, as per the Home to School Transport Policy; however it is anticipated that there will be reduced costs for out of county placements in other specialist provision, as well as the potential for reduced associated Social Services costs.

Staffing

18. The staffing ratios for E band pupils is approximately 1 teacher and 1 teaching assistant to every 8 pupils. For G band pupils it is approximately 1 teacher to every 5 pupils and 1 teaching assistant to every 3 pupils.

Community Impact Assessment/Equalities Impact Assessment/Welsh Language Impact Assessment

19. Regulations require that community and equality impact assessments are prepared for all statutory proposals. These assessments have taken place and no issues have been identified. The documents are available on the council's website and support the formal consultation process
<https://www.swansea.gov.uk/penybrynproposal>

What are the Next Steps?

20. Consultation will be carried out between 5 June 2018 and 18 July 2018, including information for learners and meetings for staff, governors and parents (see Appendix B for further details on the timeline and meeting dates) and the results will be reported to the council's Cabinet on 20 September 2018. If Cabinet decide not to proceed, that will be the end of this proposal for the foreseeable future.
21. However, if Cabinet decide to go ahead, there would be a statutory procedure to follow to make the proposed changes for April 2019. A statutory notice outlining the proposals would need to be published, inviting any formal written objections to be submitted within 28 days of publication of the notice (a copy of the notice will be provided to parents/carers and staff members and it will also be published at the school, at the nearest library and on the council website <https://www.swansea.gov.uk/penybrynproposal>). If there are objections, Council will need to consider the objections to the proposal before making a decision. Please note that responses to consultation will not be counted as objections to the proposal. You will have to write in again to the address quoted below if you wish to formally object, and objections will only be registered following publication of the notice.

22. The provisional timetable and procedure which is required by law will be as follows:

1 October 2018	Publication of statutory notices (followed by a 28-day objection period).
29 October 2018	End of objection period. If there are no objections to the proposal, the STF will be established as per the statutory notice. If there are objections, the proposal will fall to Council for determination at their meeting on 20 December 2018.

The earliest date when the new planned places will be available is 1 April 2019.

Further information on the timetable can be found at Appendix B.

United Nations Convention on the Rights of the Child (UNCRC)

23. Article 12 of the UNCRC states that children have the right to have a say in decisions that affect them and to have that view taken seriously. Therefore, throughout the process, we will ensure that children and young people have a chance to have a say on the proposals and on how they think it will affect their rights under the convention.

What do you now have to consider?

24. We would like your views as to whether or not you support the increase of planned places at Ysgol Pen-y-Bryn.

How do you make your views known?

25. Consultation meetings will be held for parents, staff and governors and you are welcome to attend the appropriate meeting (see Appendix B).

26. You are also welcome to put your views in writing on the attached pro-forma (Appendix C) to:
Mr. Nick Williams, Chief Education Officer, Civic Centre, Swansea SA1 3SN
Or e-mail SchoolOrganisation@swansea.gov.uk

27. All views must be received by no later than 18 July 2018.
Views received during the consultation period will be collated into a consultation report, together with a response from the local authority, and this report will be given to Cabinet at their meeting on 20 September 2018 for them to decide if the proposal should move to the next stage of the publication of a statutory notice.

If you require this document in Welsh or in a different format, please contact SchoolOrganisation@swansea.gov.uk (01792) 636000.

Information – Ysgol Pen-y-Bryn

School affected by the proposal:

Ysgol Pen-y-Bryn, Glasbury Road, Morriston, Swansea, SA6 7PA

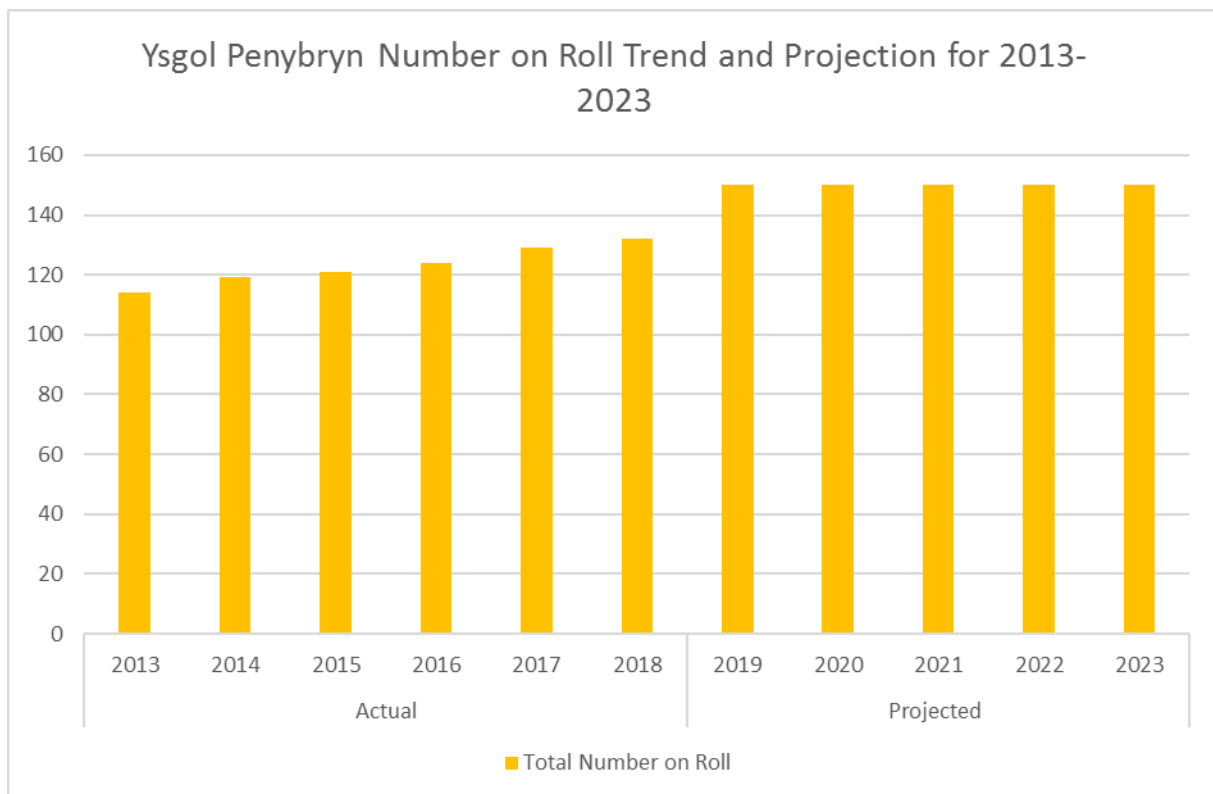
Ysgol Pen-y-Bryn is categorised as an English Medium Community Special School.

There are a number of ASD Special Teaching Facilities (STFs) in the following schools that may be affected because, where appropriate, learners may be moved from an STF into Ysgol Pen-y-Bryn, allowing pupils on the waiting list to be accommodated in those STFs:

Clase Primary School, Rheidol Avenue, Clase, Swansea, SA67JX
 Clwyd Primary School, Eppynt Road, Penlan, Swansea, SA5 7AZ
 Dunvant Primary School, Dunvant Road, Dunvant, Swansea, SA2 7SN
 Gwrosydd Primary School, Parkhill Terrace, Treboeth, Swansea, SA5 7DJ
 Portmead Primary School, Cheriton Crescent, Portmead, Swansea, SA5 5LA
 Birchgrove Comprehensive School, Birchgrove Road, Swansea, SA7 9NB
 Dylan Thomas Community School, John Street, Cockett, Swansea, SA2 0FR

All school listed above are English Medium Community Schools.

Number of Pupils on roll (at January PLASC census date), and pupil projections:



NOR and planned places information for ASD STFs in Swansea:

School	Number of ASD STF Pupils on Roll						
	Year						
	Planned Places	2013	2014	2015	2016	2017	2018
Clase Primary ASD STF	18	14.0	11.0	12.0	11.0	11.0	10.0
Clwyd Primary ASD STF	18	18.0	17.0	17.0	17.5	16.5	17.0
Dunvant Primary ASD STF	16	0.0	0.0	0.0	0.0	0.0	1.5
Gwrosydd Primary ASD STF	20	0.0	8.5	15.0	19.0	17.0	19.5
Portmead Primary ASD STF	16	0.0	0.0	0.0	0.0	0.0	0.0
Birchgrove Comp ASD STF	16	0.0	0.0	0.0	0.0	0.0	0.0
Dylan Thomas ASD STF	21	15.0	15.0	19.0	20.0	20.0	20.0

Projections for future years are up to the number of planned places in each STF.

* opened in January 2018

Possible impact on nursery provision?

Increasing the planned places at Ysgol Pen-y-Bryn will not impact on nursery provision in Swansea.

Condition of Buildings:

All schools in Swansea are allocated a condition rating as follows:

- A = Performing as intended and operating efficiently
- B = Performing as intended but exhibiting minor deterioration
- C = Exhibiting major defects and/or not operating as intended
- D = Life expired and/or risk of imminent failure

The current condition rating of Pen-y-Bryn School is Band C.

Quality of Education:

The school was inspected by Estyn in 2013. The summary of the inspection is shown below. Also provided is summary information from the Welsh Government's My Local School website.

A report on Ysgol Pen-y-Bryn October 2013

Summary

The school's current performance	Good
The school's prospects for improvement	Good

Current performance

Ysgol Pen-y-Bryn is a good school because:

- leaders have high expectations and ensure that the school functions effectively;
- pupils achieve good standards in their learning and develop very good communication skills;
- teaching in most lessons is good and in a few cases excellent;
- provision for pupils' health and wellbeing is good;
- staff work exceptionally well as a team and manage behaviour skilfully;
- learning experiences are very well matched to the learning needs of the pupils; and
- provision for pupils' health and wellbeing is good.

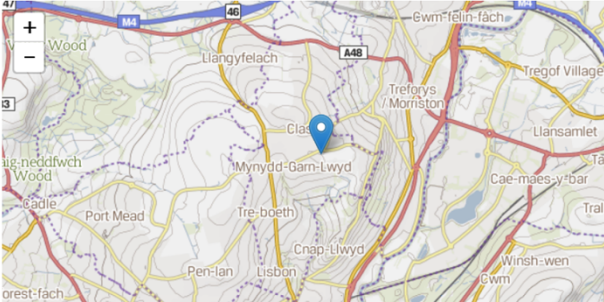
Prospects for improvement

Prospects for improvement are good because:

- senior leaders and the governors have a clear vision for the school, which is shared by all staff;
- leadership is well distributed across the staff;
- staff are highly motivated, feel valued and are keen to move the school forward;
- staff performance is managed carefully;
- the school has very strong partnerships which impact positively on the wellbeing and outcomes for pupils; and
- the school manages its resources well and provides good value for money.

Ysgol Pen-y-Bryn

Ref: 6707000



Basic Details
Local Authority
Swansea
Type
Special (with post-16 provision)
Gender Mix
Mixed
Language
Not applicable

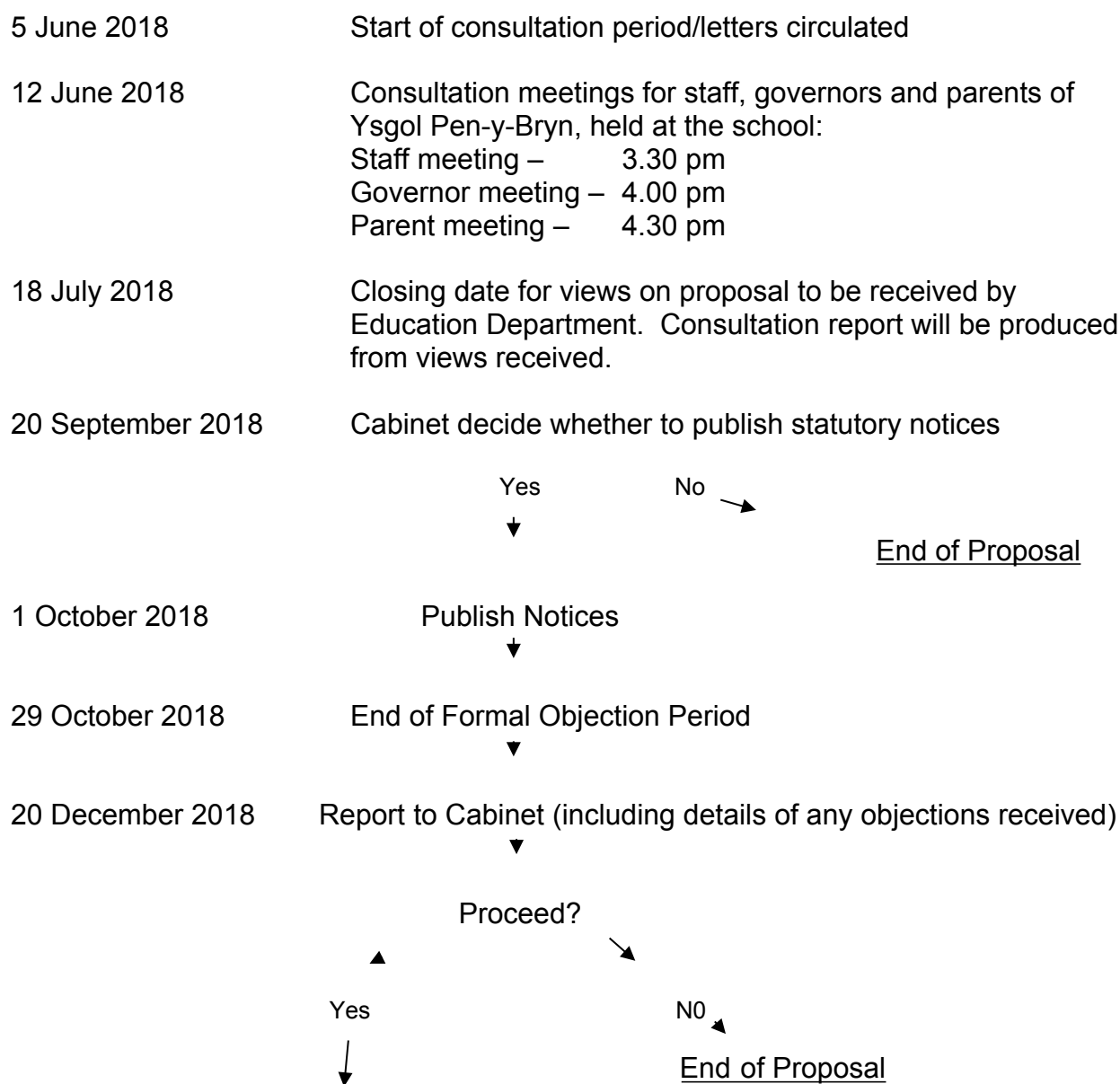
Contact Details
✉ Glasbury Road
Morriston
Swansea
SA6 7PA
☎ 01792 799064

External Links
[Estyn Report](#)

Defining schools according to Welsh medium provision

SUMMARY	PUPILS	RESOURCES ▼	CATEGORISATION	PE & SPORT	
129 Number of Pupils, 2017	2017	£17136 School budget per pupil	2017	Green Support Category	2017

Timetable



Proposal implemented on 1 April 2019

Response Form

Proposal to increase the planned places at Ysgol Pen-y-Bryn

Please note that under the Freedom of Information Act any responses received can be requested and may have to be made public. All views received in writing during the consultation and any subsequent objection period will be forwarded to Councillors that participate in the Cabinet meetings. Correspondence will also be recorded and acknowledged.

Please send in your response by **no later than 18 July 2018**

1. Are you in favour of the proposal?

Yes	
No	

2. Please indicate if you are responding as:

Pupil	Parent/ Carer	Member of Staff	Governor	Community Member	Other (please indicate)

3. Comments on the proposal (positive and negative) – please continue overleaf if required

4. Your name: _____

5. Your address/email:- _____

If you would like to receive an acknowledgement of receipt to this address/email please tick here:

6. Please indicate if you would like to receive notification of when the consultation report is published using the email/address above.

Yes	
No	

Please return to:

Nick Williams, Chief Education Officer,
Education Department, Civic Centre, Swansea SA1 3SN.

Or you can visit our website and complete the survey online by going to:

<https://www.swansea.gov.uk/penybrynproposal>

Alternatively you can fax the completed form to (01792) 636553 or scan and send to:
SchoolOrganisation@swansea.gov.uk

Swansea Council is the data controller for the personal information you provide on this form. We are collecting this information as part of our obligation under the Welsh Governments [School Organisation Code \(July 2013\)](#). Your information will be used to help us fulfil our legal obligation and will not be used for any other purpose. We will not share your data with third parties unless we are required or permitted to do so by law.

Data protection law describes the legal basis for our processing your data as necessary for compliance with a legal obligation. For further information about how Swansea Council uses your personal data, including your rights as a data subject, please see our corporate [privacy notice](#) on our website.